

Merrimac River Rowing Association

Year 2014 Review

Dec 9, 2014

Prepared by Karen Scammell, John Ballantine, Bronwyn Chapman

Agenda

- Call to order
- Reading and Approval of November meeting minutes
- Review of CY2014
 - ❖ Membership
 - ❖ Programs
 - ❖ Regattas
 - ❖ Equipment
- Proposal for Base Membership and Payment
- Volunteer Recognition and Call for Committee Volunteers
- Elections for Officers
- New Business
- Adjourn



Nov Meeting Minutes

3

- Reading and Approval of November Meeting minutes



9 December 2014

Safety Message:

4

To be delivered by member of Safety Committee

2014 – Budget and Program Objectives

5

- We were budgeted to make an operating profit of \$8.5K; and after reserve for boat depreciation, would have a net result of \$500.
- Grow the MRRA to beyond 100 members
- Continue Learn to Scull with a paid coach
- Grow Sweep rowing with increased programs and professional coaching
- Run the Festival Regatta with Break-Even
- Run a successful, profitable TRR

2014 – Budget and Program Objectives - RESULT

6

- We were budgeted to make an operating profit of \$8.5K; and after reserve for boat depreciation, would have a net result of \$500.
 - Operating loss of \$2166 (not incl regattas)
- Grow the MRRA to beyond 100 members
 - 104 PAID MEMBERS (increase from 84 in 2013)
- Continue Learn to Scull with a paid coach
 - Ran LTScull 2 but not enough for LTScull 1

2014 – Budget and Program Objectives - RESULT

7

- Grow Sweep rowing with increased programs and professional coaching
 - We ran LTSweep with 7 people at reduced rate
 - Professional coaches of Mark Lewis, John Cotter and KC Lombard
- Run the Festival Regatta with Break-Even
 - Made \$4353 on Festival
 - Added USRowing NEMA event at \$5054 profit
- Run a successful, profitable TRR
 - Increased boats to 764 entries, 3rd launch location

9 December 2014

Membership

8

- 104 Full Paying Members

	Log Book Sculling	Private Rack space	LT Scull 1	LT Scull 2	Open Sweep	LT Sweep	Masters Sweep
2014	41 plus 24 Student	19	0	9	4-6	7	8-10
2013	45 +11 paid reduced fee	21	14	9	12 (I) 7 (II) 4 (III)	0	16 (I) 11 (II)
2012	45 (+15)	22	11	16	27	8	18
2011	42	21	6	8	26	11	16
2010	50	19	7	7	12	7	8

Membership –categories

9

- ❑ Continued a reduced rate \$100 Off-Peak Sculling
 - Can row after 9am any day
 - No boat reservation privileges
 - 5 rowers opted for this
- ❑ Expanded Student Sculling
 - Offered \$65 membership and \$50 for restricted sculling
 - Greatly increased participation with UML students
 - 24 total (typically is 2-4 any given summer)
- ❑ No Junior Sweep Program – run by UML instead

9 December 2014

Bronwyn Chapman
And Karen Scammell
December 9, 2014

MRRA 2014 FINANCIAL RESULTS

Programs slowing / growth in regattas

11

MRRA and TRR combined	2011	2012	2013	2014 (est)
Beginning bank balance	51,778	71,413	98,988	99,293
Operating results				
Income	49,040	56,850	40,638	34,277
Expenses	(41,419)	(49,154)	(43,642)	(34,443)
Operating Profit	7,621	7,696	(3,004)	(166)
(before boat reserve 8k)				
Capital purchases	(10,870)	(5,320)	(28,445)	(16,400)
equipment sales	2,850	350	1,600	2,500
	(8,020)	(4,970)	(26,845)	(13,900)
Regattas				
Income	73,563	73,616	83,363	95,146
Expense, w/LHS donation	(52,729)	(48,767)	(55,517)	62,787
Net cash flow	20,034	24,849	27,846	32,359
Ending bank balance	71,413	98,988	96,985	117,586

MRRA 2014 Budget results and 2013 *reformatted 2014*

Revenues		2014(f) actual		2013 bud	2013
12					
	membership **	11,510	8,035	19,750	18,450
	rack fees	6,300	6,650	6,650	7,150
	LT scull	5,400	2,540	5,600	4,800
	Sculling **	31,120	22,045	7,520	600
	Sweep programs	9,670	5,692	29,190	9,650
	sub-total	\$52,300	\$35,772	\$68,710	40,638
<u>Expenses</u>					
	UML payments	15,000	14,400	15,000	14,400
	insurance	4,100	4,444	3,500	3,772
	maintenance	5,000	2,811	5,000	4,257
	operating	2,650	2,963	3,850	10,151
	scholarships/charity	1000	1000	1,000	800
	annual party	1,500	2,000	1,500	1,500
	Sweep & programs	<u>14,651</u>	<u>6,025</u>	<u>26,844</u>	<u>8,762</u>
	sub-total	(43901)	(35,743)	(56,694)	(43,642)
OPERATING PROFIT		\$8,399	\$ 29	\$12,016	(3,004)

Program P&L 2014

[illegible]

Membership Base is \$153/person

14	Budget Amt		<u>Base Allocation</u>
Payments to UML	\$14,400		\$9,600
Equipment Maintenance/ repairs	2,811		
Insurance	4,444		889
Safety	324		324
Social	150		150
Annual Party	2,000		2,000
US Rowing membership	350		350
Scholarships - Charity	500		500
Advertising /web	519		519
Other (misc, stamps, etc)	1,620	Tax prep	1,620
9 December 2014		TOTAL	\$15,952

Comments budget / actual 2014

15

- Base club expenses are higher than are covered by the \$125/\$100/year (\$153/person)
- Recommend increasing base to \$150 or \$125 if paid by Jan 15 2015
- Programs subscriptions down but except for Msweep, expenses scaled so Programs at break-even
- Need more sculling to cover base operating costs
- Purchase of equipment, still depends on regattas
- **Strong cash** position (\$98,000); Need growth of programs and activities, and volunteers!

Festival and NEMA Regatta 2014

16

- Karen Scammell, Director with Key group of Local Organizing Committee members
- Festival: 179 entries (192 in 2013) and 26 clubs (22 clubs in 2013)
- NEMA: 299 entries and 32 clubs
- Some bad luck with high water and stakeboats; competitors prefer Festival Atmosphere.

	2014	2014	2013	2012	2011
	<u>Fest</u>	<u>Nema</u>			
Income	\$9,292	11,701	9,250	9,724	7,081
Expenses	\$ (4,940)	(6,647)	(3,995)	(4,941)	(2,131)
Net Profit	\$ 4,352	5,054	5,255	4,783	4,950

Textile River Regatta

17

- Jay Feenan, Peg Landry, Carl Popolo Co-Chairs
- 764 Entries (up from 703 entries (2013) and 570 (2012) and 89 clubs
 - No Green Mountain Head conflict
 - More Juniors
 - 3rd launch site at Rourke DCR ramp
- Very successful day – positive feedback; well run regatta
- Key to success was experienced Marshalls and plenty of Volunteers!!
 - ▣ Lowell High and UML contributed a lot of help- labor

- Income \$ 74,153 note, additional vendor fees,
- Expenses \$ (55,500) and expenses coming in
 - Includes \$6,000 LHS, \$12K UML
- Net Profit **\$ 18,653**

- Transfer MRRA estimate \$13K
- TRR going to purchase docks at \$15K

9 December 2014

2 Weekend Regattas in 2015

18

□ Joint Festival / NEMA again

- Weekend of June 21-22nd (traditional Festival weekend)
- Rely heavily on UML and LHS Students who are around that weekend

□ 2-Day Textile (with US Rowing National Head Race)

- October 3-4th
- Masters mostly on Saturday and HS/ collegiate on Sunday
- Heavy commitment from greater Lowell groups – UML, LHS, Philanthropic groups

□ Would aim to keep MRRA volunteerism to 8 hours each weekend (so one full day or 2 half days)

□ What are we raising money for??

- Capital Fund for New Boathouse – 5 yr plan to be in own space
- Constrained by space now; other programs growing

Safety Committee Report 2014

19

❑ **Completed in 2014**

❑ **Scheduled for 2015**

- Repeat Flip Clinic and USCG Auxiliary Boating Class
- Refine Rower Proficiency Classification System
- Install Safety Reminder Sign at Entry to Docks
- Schedule CPR Class
- Work with Boat Captain to Review Club Safety Policies

9 December 2014

MRRA Equipment Committee

20

- 2014 purchases –
 - Wintech LW Intermediate/racing (\$6,000)
 - Vespoli convertible Double/Pair: (\$10,500)
 - 4 sets of Concept II sculling blades (\$2,100)
- 2014 Sales –
 - Peinert \$1,000
 - Vespoli MW 2X/- \$1500
- 2014 repairs & upgrades:
 - New propeller for Carolina skiff
 - Various repairs ongoing basis

2014 LEARN TO SCULL

PREPARED BY CHUR MASORS



□ *Coaches*

- John Cotter
- Marcia Beckett
- Robbie Walters
- Alex Gavriel

2014 LtS



- June LtS 1 & July LtS 2 cancelled
- July LtS 1 - 7 students
- August LtS 2 - 3 students
- 3 new members from August class

□ Tons of thanks to my wonderful volunteers

□ Denise B

■ Bob B

■ Joe LaF

■ Erinn McL

■ Mark R

■ Dottie S

Joe B

Wilma B

Bob L

Roland M

Barb S

MRRA LOGBOOK STATS

2014



Rows by Boat Type and Day

Total Logbook Events >00:30 <03:00

	1	2	4	8	Total
SUN	144	19	8	4	175
SAT	237	21	12		270
M-F	1,393	115	78	34	1,620
Total	1,774	155	98	38	2,065

2013

	1	2	4	8	Total
SUN	222	25	21	3	271
SAT	201	32	19		252
M-F	1,122	141	110	53	1,426
Total	1,545	198	150	56	1,949

Total Logbook Events >00:30 <03:00

	1	2	4	8	Total
SUN	7%	1%	0%	0%	8%
SAT	11%	1%	1%	0%	13%
M-F	67%	6%	4%	2%	78%
Total	86%	8%	5%	2%	100%

2013

	1	2	4	8	Total
SUN	11%	1%	1%	0%	14%
SAT	10%	2%	1%	0%	13%
M-F	58%	7%	6%	3%	73%
Total	79%	10%	8%	3%	100%

Total Boat Time on Water, Days

	1	2	4	8	Grand Total
SUN	9.52	1.28	0.54	0.31	11.65
SAT	16.08	1.54	0.89		18.51
M-F	89.82	7.74	5.58	2.61	105.74
Grand Total	115.42	10.56	7.01	2.92	135.91

Total Boat Time on Water, %

	1	2	4	8	Grand Total
SUN	7%	1%	0%	0%	9%
SAT	12%	1%	1%	0%	14%
M-F	66%	6%	4%	2%	78%
Grand Total	85%	8%	5%	2%	100%

Total People Time on Water, Days

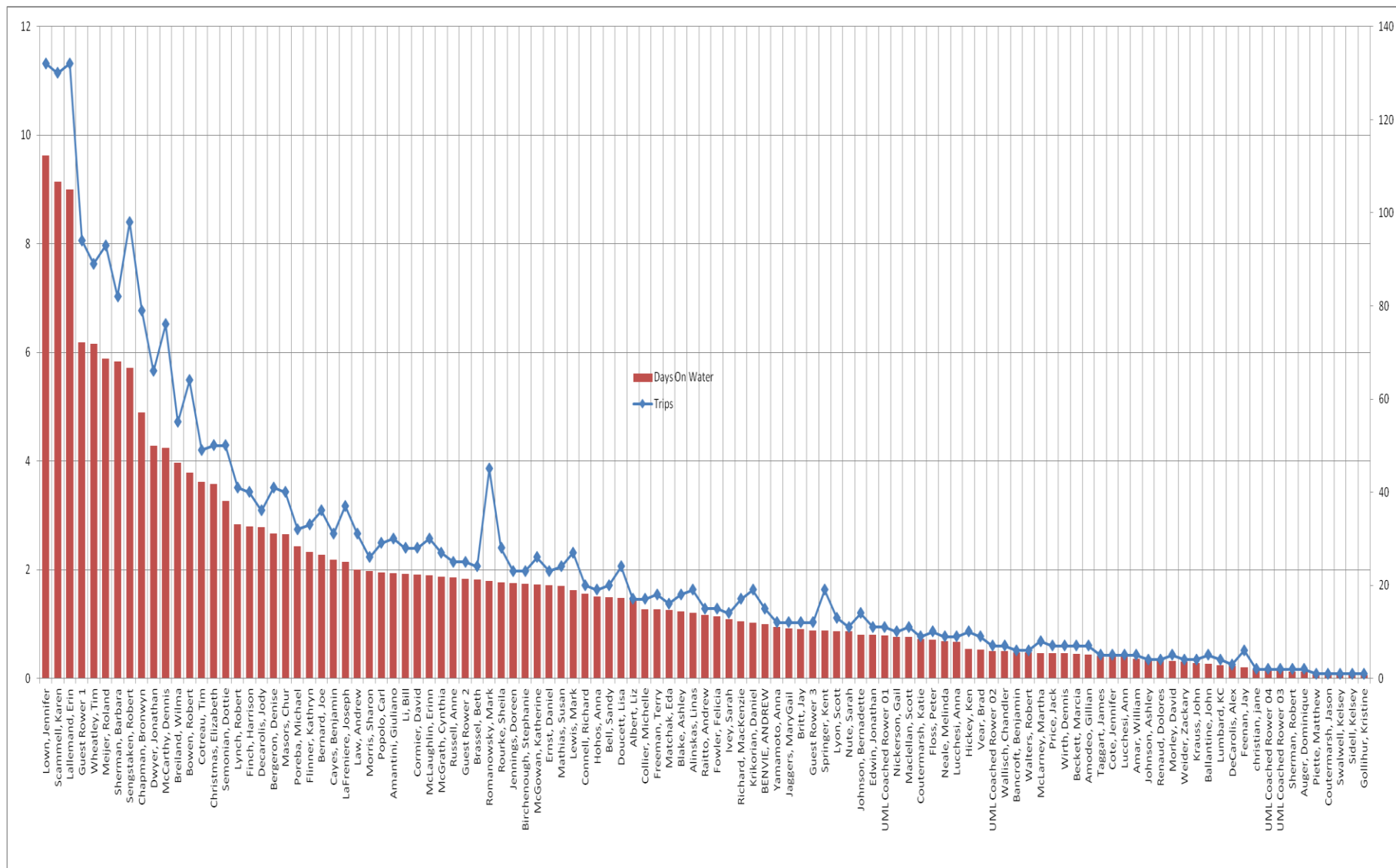
	1	2	4	8	Grand Total
SUN	9.59	2.57	2.40	2.79	17.34
SAT	16.08	3.08	3.88		23.04
M-F	89.87	15.47	23.68	23.46	152.49
Grand Total	115.54	21.12	29.96	26.24	192.87

Total People Time on Water, %

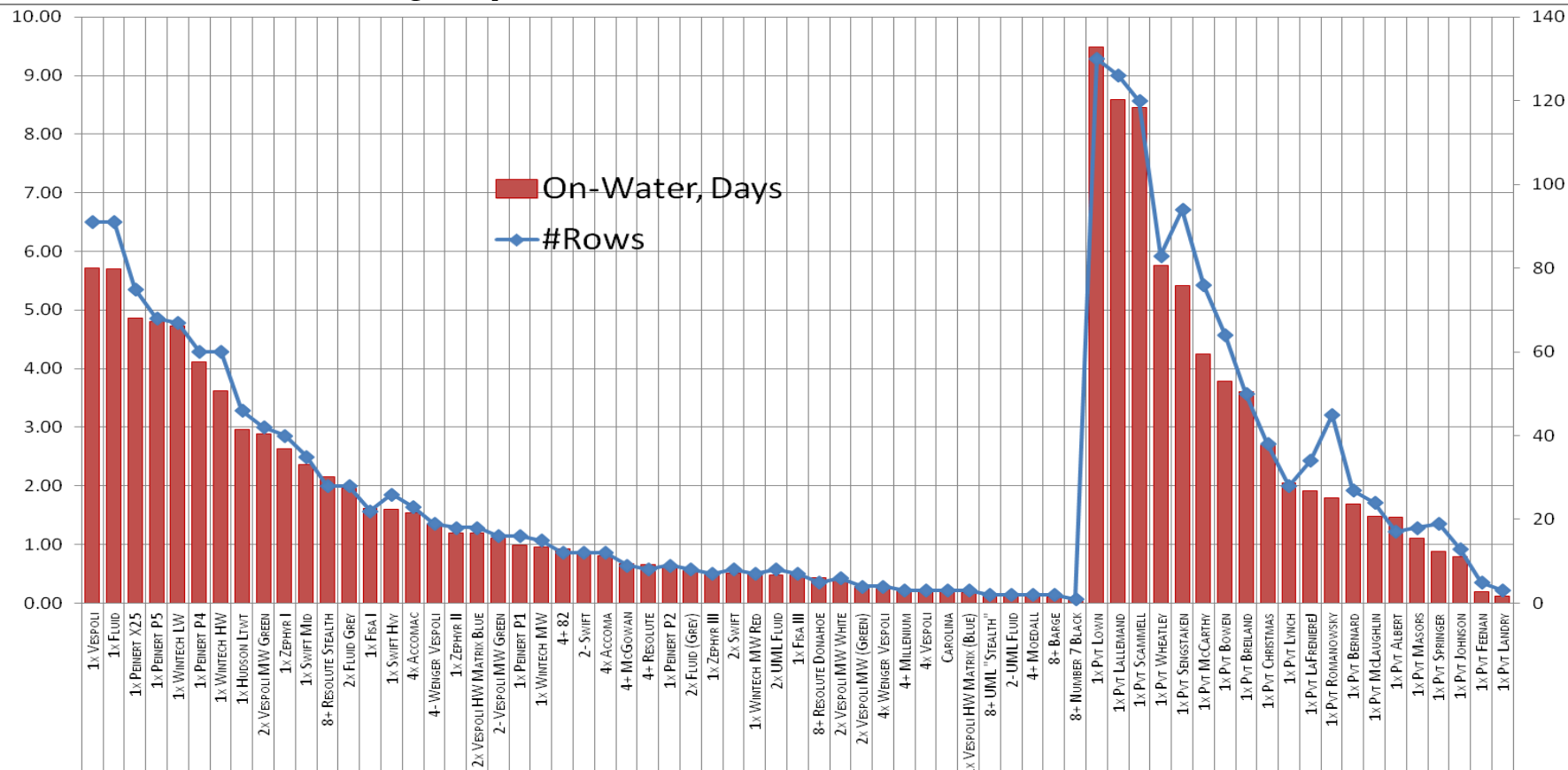
	1	2	4	8	Grand Total
SUN	5%	1%	1%	1%	9%
SAT	8%	2%	2%	0%	12%
M-F	47%	8%	12%	12%	79%
Grand Total	60%	11%	16%	14%	100%

- **Boats** spent a total of 136 days on the water, up from 125 in 2013. 85% of all **boat-time** was in 1x, up from 78% in 2013.
- 136 days divided by 2,065 rowing events is an average row of 1 hour 34 minutes.
- **Rowers** spent a total of 193 days on the water, down from 198 in 2013. 60% of all **people-time** was in 1x, up from 49% in 2013.
- 8s represent only 2% of boat time on the water, but 14% of all rower time.

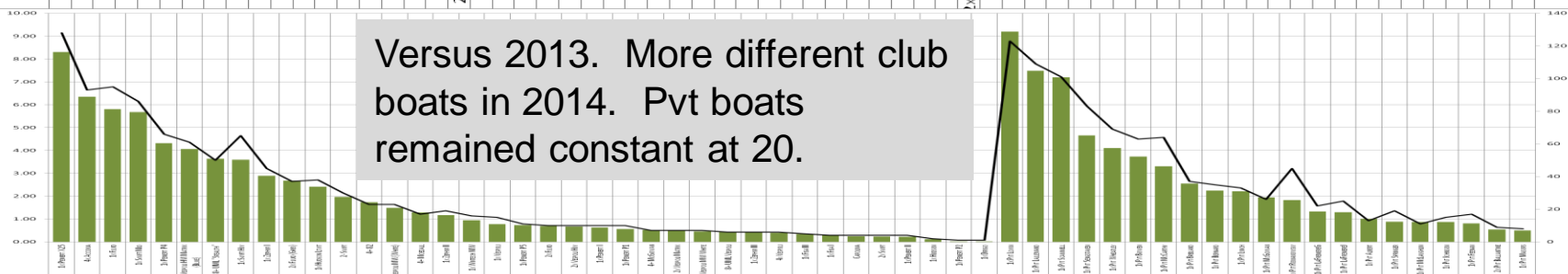
Total Rowing Days by Rower – J. Lown wins 3rd year in row



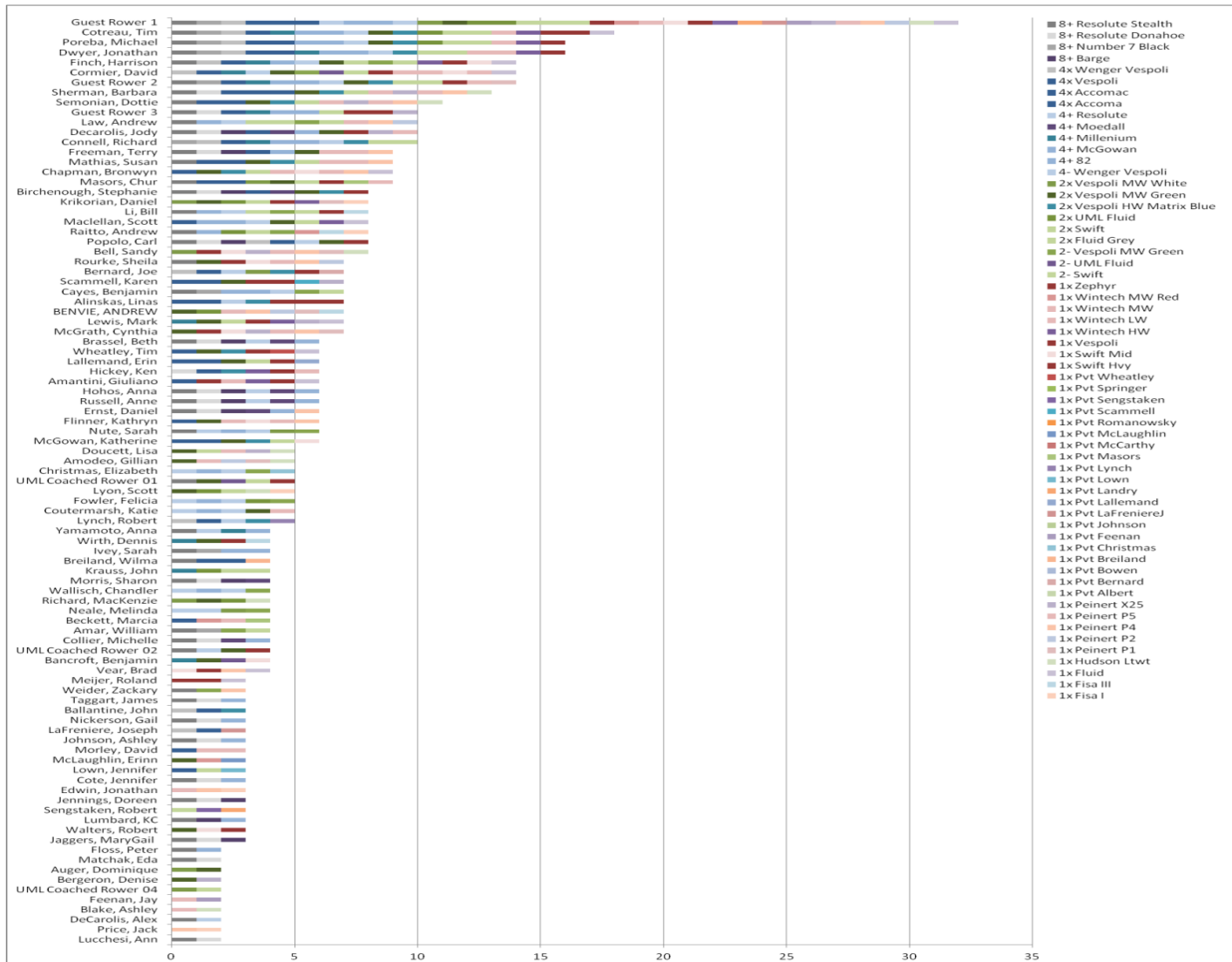
Total Rowing by Boat



Versus 2013. More different club boats in 2014. Pvt boats remained constant at 20.



Most Flexible



Tim Coutreau
rowed 18
different boats.
Not Shown: 18
people rowed
only one boat.
Median for
entire club was
4 different boats

Planning for Capital Equipment

31

- The Equipment Committee will be working early 2015 on equipment needs
- Assumptions of the past will continue
 - ▣ Equipment purchase \$ comes from regattas
 - ▣ Our space is fixed at present allocation
- Need to look at all boats and equipment
 - ▣ Oars
 - ▣ Wakeless launch
 - ▣ Replace old Vespoli 2X and last old Peinert

Committees Open Enrollment

32

- Equipment Committee
 - Open, Chair -> seat new committee in January
- Safety Committee
 - Open, Chair (former Bob Lynch)
- Membership/Programs committee
 - Vice President and OPEN, Co-chairs
 - Develop the programs and program management training for CY2015
- Social
 - Open, Chair (former Kathy McGowan)
- *Rack Policy Committee* – continuing

Social Committee 2014

33

Providing opportunity for members to mix

- Encourage group rows and coffee
- March Meeting: St Patrick's Day snacks: Samples of MRRA outerwear.
- April Meeting: On the Water! Samples of MRRA Clothing
- June 7th National Learn To Row Day- Breakfast- snacks
- June 28 – 29th: NEMA and Festival Regattas- organized coolers for launches, breakfast and Lunch for regatta officials and volunteers
- Saturday AM breakfast after session LTScull,..July
- July 8th Monthly Meeting: Cocktails on the deck, Invite recent LTR/LT sweep
- ** Through Summer/Fall organize Full Moon and Twilight Rows
- ** Mentoring for new members
- Clothing for MRRA. Still have some items available

Approval of Base Membership

34

- Increase Base Membership \$25 to \$150 for CY2015
- Payment of Base Membership due by 15 January
- Discount of \$25 for payments postmarked or delivered to the hand of Treasurer/Secretary by 15 January (so \$125 if paid on time)
- Student rate of \$75 membership and \$75 off-peak logbook sculling
- Rationale
 - ▣ Base Membership defines voting rights
 - ▣ Club has cash flow needs before rowing season starts for insurance, boathouse user fees
 - ▣ High % of members paid by 15 January 2014

Approval of Definition of Student

35

- Student is not defined in the bylaws

- Proposed:

A Student membership rate is offered to anyone who has not reached his/her 23rd birthday at the time of membership

- Rationale: We had several members who are adults and taking courses who have asked for student membership. The reason for the student membership is to help young people who are still in college and not yet fully in the workforce

9 December 2014

Volunteering in Club

36

- As an all-volunteer organization, it is imperative and a requirement of membership to volunteer
 - Very high response for TRR and Festival volunteering
 - Need new blood on Equipment committee
 - Very active and demanding committee
 - More help makes less work for all

Volunteer of the Year Award

37

- Barbara Sherman
- Linas Alinskas
- For going above and beyond consistently for the regattas this summer – we would have not have been as successful without your dedication and labors!

Appreciation

38

- ***Thank you to our Program Managers***
 - Chur Masors – Learn to Scull
 - Carl Popolo – Masters Sweep
 - Jon Dwyer – Open Sweep Men
 - Katie Coutermarsh – Open Sweep Women
 - Linas Alinskas – Coached Sculling
 - Terry Freeman and Jody Decarolis – LT Sweep

- ***Thank you to our fabulous Coaches***
 - K.C. Lombard
 - Mark Lewis
 - Alex Gavriel
 - Robbie Walters

Appreciation

39

□ Thank you to our Regatta Directors

- Jay Feenan
- Peg Landry
- Carl Popolo
- Karen Scammell
- LOC for summer regattas:
 - Dottie Semonian – Dave Morley – Linas Alinskas- Barbara Sherman – Bronwyn Chapman – Dennis McCarthy

□ **Thank you to 2 tremendous spouses –**

- Mike Power and John Breiland

Appreciation

40

- Thank you to Committee Chairs
 - Equipment: Bob Sengstaken
 - Social: Kathy McGowan
 - Safety: Bob Lynch
 - Membership/Programs: Carl Popolo, Jason Holden, Karen Scammell
- Thank you retiring board members
 - Jason Holden, Trustee
 - Jay Feenan, former president and VP
- Thank you to our Webmaster Carl Popolo !!

9 December 2014

Special Thank You to Jay Feenan

41

- For his decades of service to the MRRA
- Leadership in growing the TRR over the past 6-7 years
- Improving relationships between the MRRA, the University and the Lowell City community

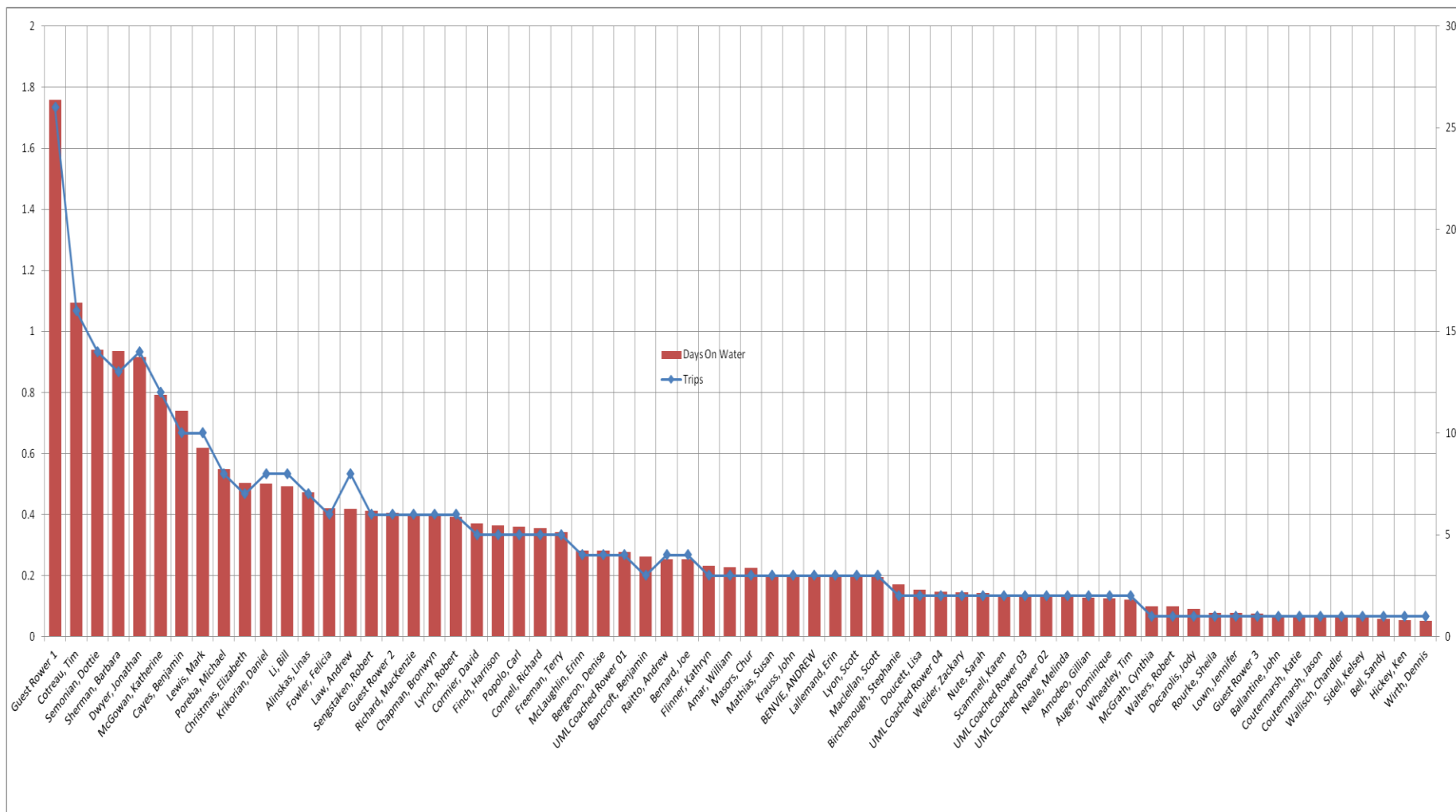
42

Annual Election of Officers

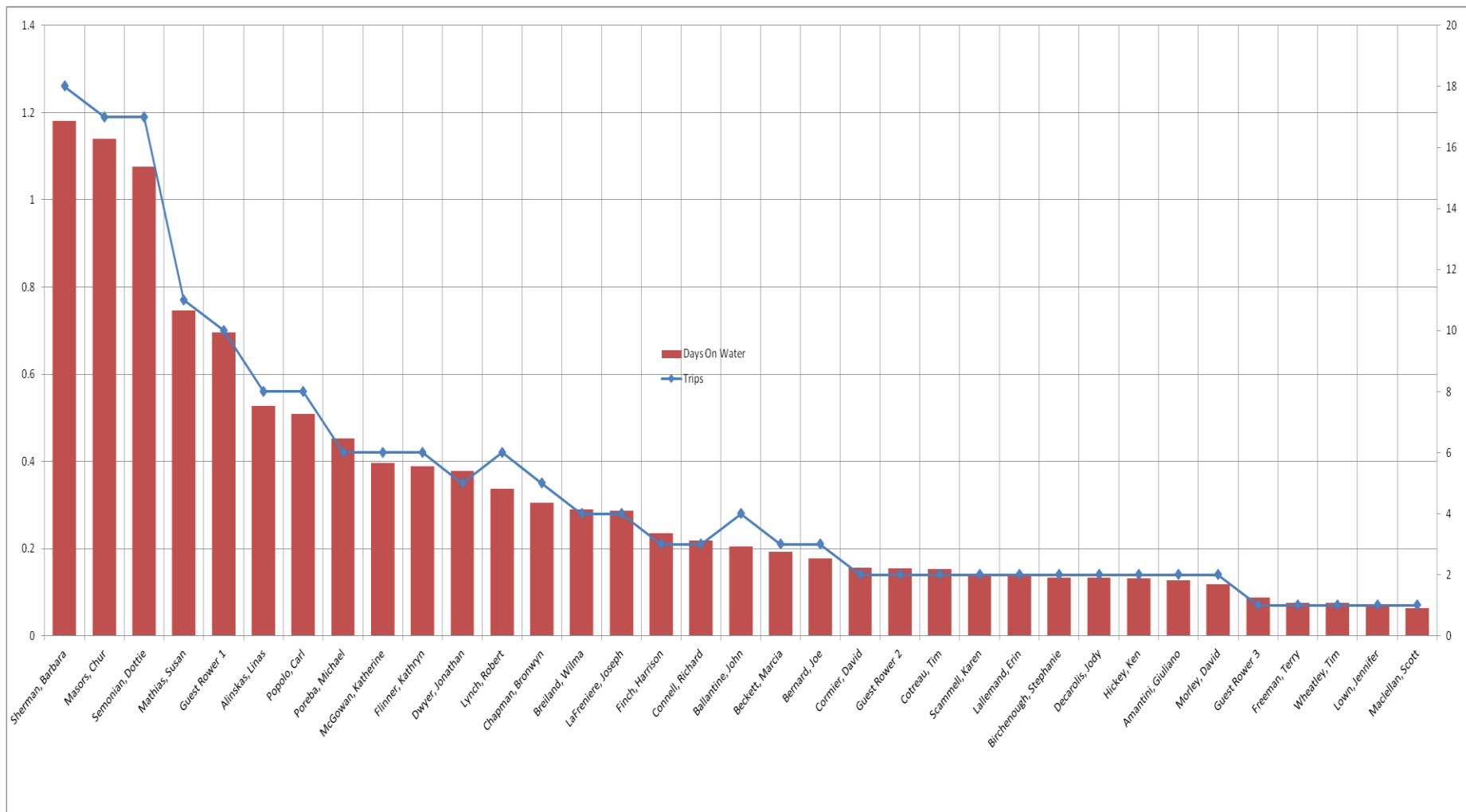
9 December 2014

Detail slides for backup

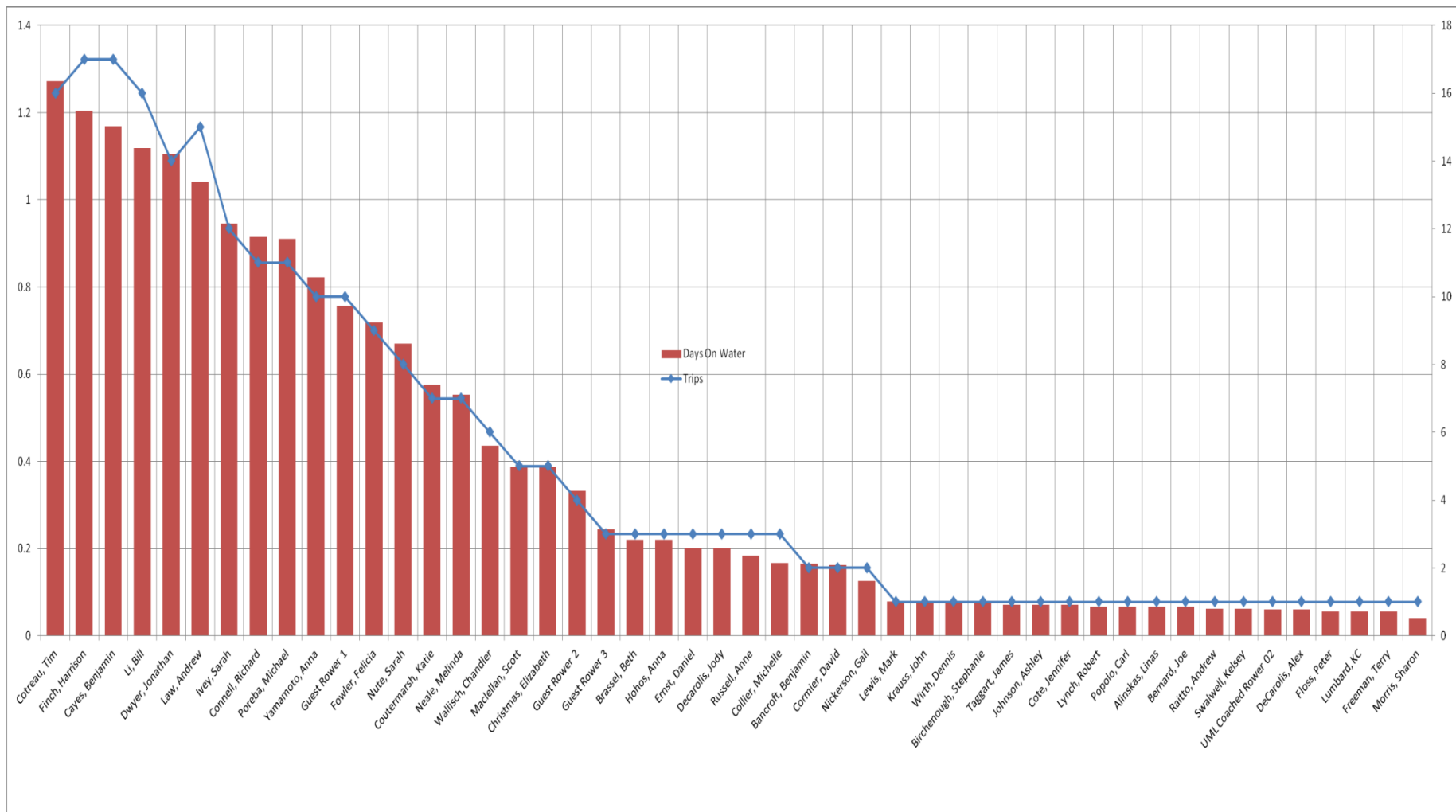
Total 2x/2- Rowing by Rower



Total 4x Rowing by Rower



Total 4-/4+ Rowing by Rower



Total 8+ Rowing by Rower

